

PLANS FOR N. 5TH AVE STREET IMPROVEMENTS LOGAN, IOWA

PLOTTED: Thursday, June 22, 2023 9:02:30 AM



VICINITY MAP
NOT TO SCALE

DRAWING INDEX	
DRAWING NUMBER	DRAWING TITLE
A.01	TITLE DRAWING
A.02	LEGEND
A.03	SITE PLAN
C.01 & C.02	ESTIMATE REFERENCE
D.01	PLAN & PROFILE
L.01 & L.02	INTERSECTION DETAILS
LA.01	LANDSCAPE PLAN

CITY OFFICIALS
MAYOR: CLINT MCDONALD
PUBLIC WORKS: DUSTIN MOORES
CITY CLERK: ANGELA WINTHER

CITY COUNCIL
KIM FISHER
TYLER HINKEL
SCOTT MOSS
TIFFANY SCHEURING
JASON SPORRER



THE ESTIMATE REFERENCE AND THE 2022 EDITION OF SUDAS SHALL APPLY TO THIS PROJECT.

I HEREBY CERTIFY THAT THIS ENGINEERING DOCUMENT WAS PREPARED BY ME OR UNDER MY DIRECT PERSONAL SUPERVISION AND THAT I AM A DULY LICENSED PROFESSIONAL ENGINEER UNDER THE LAWS OF THE STATE OF IOWA.	
SIGNATURE:	
NAME:	CHAD P. KEHRT
DATE:	6-21-23
MY LICENSE RENEWAL DATE IS DECEMBER 31, 2023	
PAGES COVERED BY THIS SEAL: ALL DRAWINGS IN INDEX	

X-REFS: FILE PATH: \\KWC-FS\KWC\SHARE\0300\0322-LOGAN\0322-0052_N_5TH_AVE_ST_IMPROVE\CADD\PRODDRAWINGS\TITLE DRAWING

DATE	REVISIONS	SCALE	AS NOTED	VERIFY SCALE	N. 5TH AVE STREET IMPROVEMENTS LOGAN, IOWA		TITLE DRAWING		DWG. NO.
		DRAWN	CALLEN	BAR IS ONE INCH ON ORIGINAL DRAWING.	203 Sergeant Square Dr • Suite B • Sergeant Bluff, Iowa 51054-0220 712-943-5055 • 712-943-5088(FAX) • 877-241-8009(WATS)				A.01
		CHECKED	CPK	IF NOT ONE INCH ON THIS SHEET, ADJUST SCALES ACCORDINGLY.					PROJECT 322-052
		APPROVED	CPK						
		DATE	3/24/23						
		ISSUED FOR	PRELIMINARY						



X-REFS: FILE PATH: \\VKINC-FS\MCSHARE\0300\0322-LOGAN\0322-0052_N_5TH_AVE_ST_IMPROVE\CADD_PRODDRAWINGS\TITLE DRAWING PLOTTED: Wednesday, June 21, 2023 2:09:59 PM

GENERAL LEGEND

	SURVEY LINE & STATION INDICATOR		12" CMP		CULVERT, SIZE AND TYPE
	EXISTING CONCRETE SURFACE		FLARED END SECTION		RAILROAD
	EXISTING ASPHALT SURFACE		MAILBOX		FENCE (ALL OTHER)
	EXISTING AGGREGATE SURFACING		SILT FENCE		PROPERTY LINE
	NEW CONCRETE SURFACE		PROPERTY PIN		SECTION CORNER
	NEW ASPHALT SURFACE		PLAT BOUNDARY		BUILDING
	NEW AGGREGATE SURFACING		ELEVATION MARKER		CENTERLINE
	NEW SEWER/MANHOLE		DIA.		ELEV.
	EXISTING SEWER/MANHOLE		PVC		POLYVINYLCHLORIDE PIPE
	NEW SEWER/INTAKE		CI		DUCTILE IRON PIPE
	EXISTING SEWER/INTAKE		CMP		VITRIFIED CLAY PIPE
	NEW WATER MAIN		RCP		REINFORCED CONCRETE ARCH PIPE
	NEW FORCE MAIN		LRCP		LINED CONCRETE PRESSURE PIPE
	NEW HYDRANT		STA.		LINE AHEAD
	NEW WATER VALVE		LB		BENCH MARK AND NUMBER
	EXISTING SANITARY SEWER AND SIZE		ROW		POINT OF INTERSECTION
	EXISTING STORM SEWER AND SIZE		PI		POINT ON TANGENT
	EXISTING WATER MAIN AND SIZE		LF		TACKED HUB
	EXISTING FORCE MAIN AND SIZE		SB-2		POINT OF VERTICAL CURVATURE
	GAS MAIN AND SIZE		PVT		VERTICAL CURVE
	UNDERGROUND POWER LINE		PC		POINT OF TANGENCY
	OVERHEAD POWER LINE		MO		DRAWING
	UNDERGROUND TELEPHONE LINE		CP-1		HIGH PRESSURE GAS
	FIBER OPTICS		(TYP.)		INTERMEDIATE PRESSURE GAS
	TOP OF EMBANKMENT		INV.		EACH WAY, EACH FACE
	TOE OF EMBANKMENT		E.W.		AT
	EXISTING MANHOLE		(BI#)		BEGINNING OF PROJECT
	AREA OR BEEHIVE INTAKE				BACK OF CURB
	EXISTING HYDRANT		PCC		HOT MIX ASPHALT
	EXISTING WATER VALVE		HMA		
	POWER POLE				
	TELEPHONE POLE				
	STREET LIGHT				
	GUY ANCHOR				
	SIGN				
	RAILROAD CONTROL LIGHT				
	RAILROAD SIGN				
	UTILITY ACCESS COVER				
	TREE AND SIZE				
	EVERGREEN AND SIZE				
	STUMP AND SIZE				
	BUSH, SHRUB OR HEDGE				
	CURB STOP AND BOX				
	SHAPE TO DRAIN				
	TRAFFIC SIGNAL				
	TELEPHONE JUNCTION BOX				
	NEW GROUND CONTOURS				
	EXISTING GROUND CONTOURS				
	EASEMENT LINE				
	EXISTING LIGHT				

NOTE: THIS IS A GENERAL LEGEND. ITEMS MAY OR MAY NOT APPEAR ON DRAWINGS.

PROTECTION OF VEGETATION NOTES:

1. TREES AND OTHER VEGETATION WHICH ARE TO BE REMOVED ARE MARKED WITH AN "X" OVER THE APPROPRIATE SYMBOL. FOR EXAMPLE 12" INDICATES THE REMOVAL OF A 12" TREE. REPLACEMENT, BY CONTRACTOR, OF THESE ITEMS IS NOT REQUIRED.
2. TUNNEL, INSTALL TIGHT SHEETING, HAND EXCAVATE OR EMPLOY OTHER MEANS APPROVED BY ENGINEER TO PROTECT EXPOSED PORTIONS AND ROOT SYSTEMS OF TREES AND OTHER VEGETATION NOT SCHEDULED FOR REMOVAL. IF TREES AND OTHER VEGETATION NOT SCHEDULED FOR REMOVAL ARE DAMAGED DURING CONSTRUCTION, REPLACE IN KIND AND SIZE AT NO COST TO CITY OR PROPERTY OWNER.

GENERAL NOTES:

1. ALL HORIZONTAL AND VERTICAL FEATURES ARE SHOWN IN SPC SYSTEM NSRS 2011 SOUTH ZONE (USF)
2. PROTECT ALL STREET SIGNS AS DIRECTED BY OWNER.
3. SHAPE ALL AREAS TO DRAIN AFTER CONSTRUCTION.
4. CONFIRM LOCATION AND DEPTH OF ALL EXISTING UNDERGROUND UTILITIES AS REQUIRED TO ELIMINATE CONFLICTS PRIOR TO CONSTRUCTION. ALLOW UTILITY PERSONNEL TO RELOCATE UTILITIES WHERE CONFLICTS OCCUR.
5. DO NOT INTERRUPT EXISTING UTILITIES OR INDIVIDUAL SERVICES UNLESS DIRECTED BY ENGINEER/OWNER.
6. CONFINE ALL CONSTRUCTION OPERATIONS, INCLUDING ACCESS TO WORK, TO R.O.W. AND CONSTRUCTION LIMITS AS SHOWN IN PLANS
7. SET MANHOLE PCC BOXOUTS $\frac{3}{8}$ " BELOW NEW PCC PAVING, CASTING SHALL BE SET $\frac{1}{2}$ " BELOW NEW PCC PAVING.
8. PROTECT UTILITY POLES, LINES, EXISTING RETAINING WALLS AND APPURTENANCES NOT SHOWN FOR RELOCATION.
9. PROTECT ALL SURFACING, NOT INDICATED BY SHADING FOR REMOVAL AND REPLACEMENT, FROM DAMAGE DURING CONSTRUCTION.
10. MORE THAN ONE (1) ACRE OF LAND WILL BE DISTURBED AS PART OF THIS PROJECT. THEREFORE, A NPDES PERMIT OR STORM WATER POLLUTION PREVENTION PLAN (SWPPP) IS REQUIRED FOR THIS PROJECT.
11. CONTRACTOR SHALL MAINTAIN DRAINAGE IN ALL AREAS.
12. CONTRACTOR TO INSTALL TEMPORARY FIRE HYDRANTS, BLOWOFFS, AND FITTINGS AS NEEDED TO FACILITATE WATER MAIN TESTING.
13. PAVEMENT MARKINGS DONE BY OTHERS.

CONSTRUCTION NOTES:

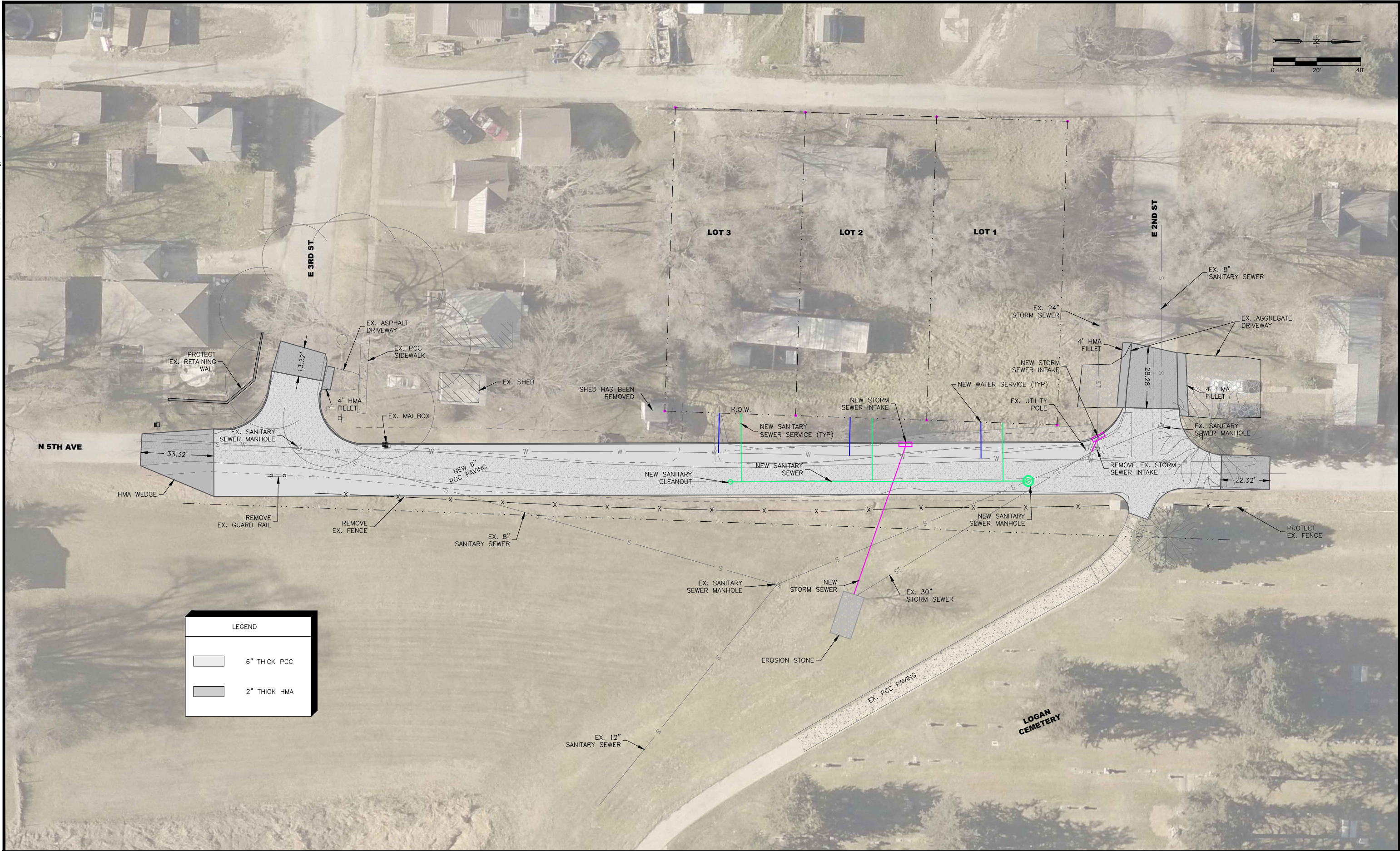
1. VERIFY LOCATION AND DEPTH OF ALL EXISTING UTILITIES PRIOR TO CONSTRUCTION.
2. MAINTAIN ACCESS TO PRIVATE PROPERTY. PROVIDE TEMPORARY SURFACING AS NECESSARY.
3. SEED ALL AREAS DISTURBED BY CONSTRUCTION UNLESS NOTED DIFFERENTLY.
4. FIELD VERIFY EXISTING STORM/SANITARY ELEVATIONS.
5. FIELD VERIFY STORM AND SANITARY SEWERS PRIOR TO ORDERING STRUCTURES TO CONFIRM CONDITIONS.
6. CONTRACTOR TO FIELD VERIFY ALL WATER MAIN ELEVATIONS AND FIRE HYDRANT HEIGHTS.
7. CONTRACTOR TO EXPOSE ALL DRAIN TILES ENCOUNTERED DURING CONSTRUCTION AND ALLOW OWNER TIME TO TELEWISE TILES PRIOR TO REPAIR OR ABANDONING TILES AND BACKFILLING TRENCH.
8. RE-SLOPE / RE-GRADE DITCHES TO DRAIN.

DATE	REVISIONS	SCALE	AS NOTED	VERIFY SCALE	N. 5TH AVE STREET IMPROVEMENTS LOGAN, IOWA	LEGEND	DWG. NO.
		DRAWN	CALLLEN	BAR IS ONE INCH ON ORIGINAL DRAWING.			A.02
		CHECKED	CPK	IF NOT ONE INCH ON THIS SHEET, ADJUST SCALES ACCORDINGLY.	203 Sergeant Square Dr • Suite B • Sergeant Bluff, Iowa 51054-0220 712-943-5055 • 712-943-5088(FAX) • 877-241-8009(VAITS)		PROJECT 322-052
		APPROVED	CPK				
		DATE	3/24/23				
		ISSUED FOR	PRELIMINARY				



PLOTTED: Wednesday, June 21, 2023 2:10:41 PM

X-REFS: BASE DRAWING & Aerial Photo
FILE PATH: \\VKN\KIM\FSM\GSHARE\03000\322-L\OGAN\0322-0052_N_5TH_AVE_ST_IMPROVE\CAADD\PRODDRAWING\A.03 SITE PLAN

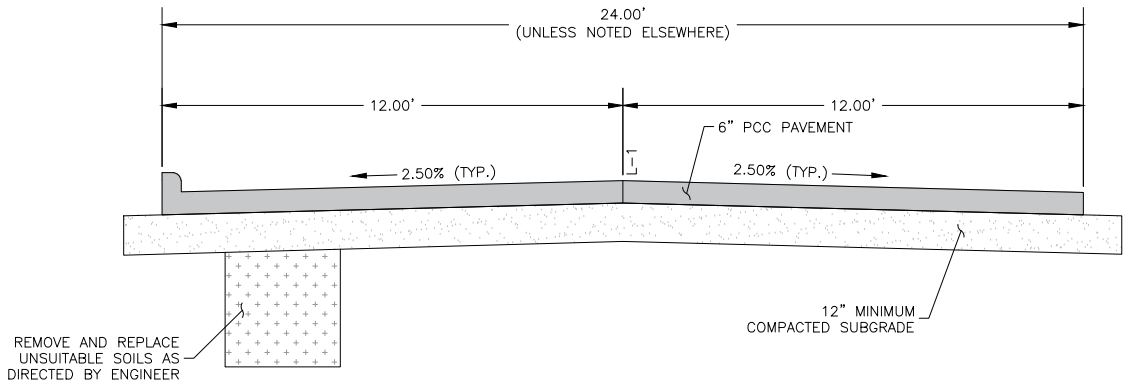


DATE		REVISIONS		SCALE	AS NOTED	VERIFY SCALE		N. 5TH AVE STREET IMPROVEMENTS LOGAN, IOWA			SITE PLAN		DWG. NO.
				DRAWN	CALLEN								A.03
				CHECKED	CPK	BAR IS ONE INCH ON ORIGINAL DRAWING.							
				APPROVED	CPK	IF NOT ONE INCH ON THIS SHEET, ADJUST SCALES ACCORDINGLY.							
				DATE	3/24/23								
				ISSUED FOR	PRELIMINARY								PROJECT 322-052

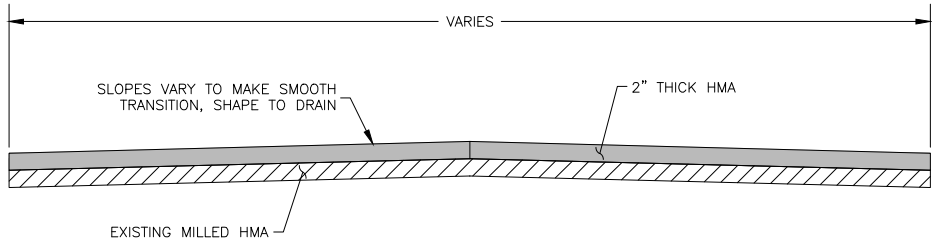
203 Sergeant Square Dr • Suite B • Sergeant Bluff, Iowa 51054-0220
712-943-5055 • 712-943-5000(FAX) • 877-241-8009(VOICEMAIL)

PLOTTED: Wednesday, June 21, 2023 2:10:52 PM

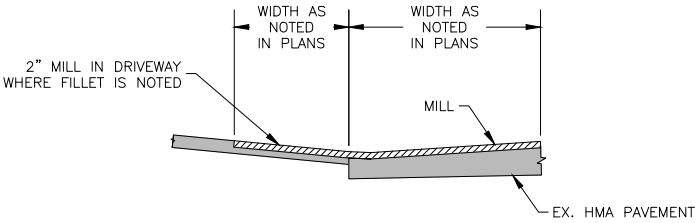
X-REFS: FILE PATH: \\V\KINC-FS\MCSHARE\03000\322-L\OGAN\0322-0052_N_5TH_AVE_ST_IMPROVE\CAADD_PRODDRAWINGS\TYPICAL SECTION



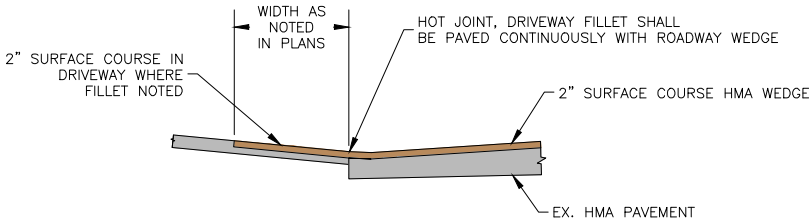
6" PCC PAVEMENT
TYPICAL SECTION



HMA WEDGE
TYPICAL SECTION



PAVEMENT SUB-SECTION
IMPROVEMENT PHASE



COMPLETED DRIVEWAY FILLET

DRIVEWAY FILLET DETAIL

DATE	REVISIONS	SCALE	AS NOTED
		DRAWN	CALLEN
		CHECKED	CPK
		APPROVED	CPK
		DATE	3/24/23
		ISSUED FOR	PRELIMINARY



N. 5TH AVE STREET IMPROVEMENTS
LOGAN, IOWA

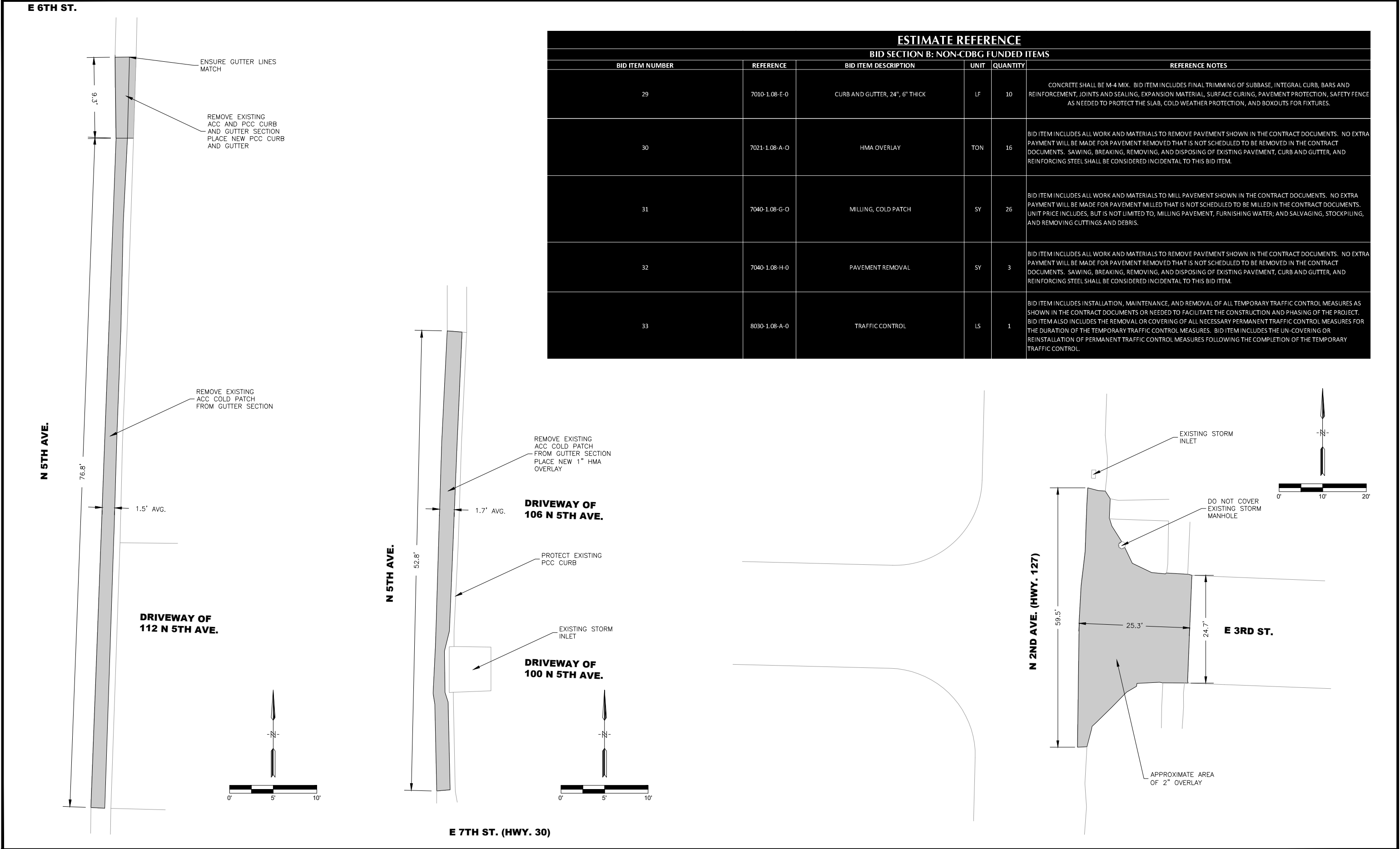
203 Sergeant Square Dr • Suite B • Sergeant Bluff, Iowa 51054-0220
712-943-5055 • 712-943-5066(FAX) • 877-241-8009(WATS)

TYPICAL SECTIONS

DWG. NO.
B.01
PROJECT
322-052

ESTIMATE REFERENCE									
BID SECTION A CDBG FUNDED ITEMS									
BID ITEM NUMBER	REFERENCE	BID ITEM DESCRIPTION	UNIT	QUANTITY	REFERENCE NOTES				
1	2010-1.08-D-3	TOPSOIL, OFF-SITE	CY	282	QUANTITY IS AN ASSUMED QUANTITY. MEASUREMENT SHALL BE IN CUBIC YARDS AND WILL BE COMPUTED ON THE BASIS OF A UNIFORM 3" THICK FURNISHED THICKNESS. USE ONLY AS DIRECTED BY ENGINEER.				
2	2010-1.08-E-0	EXCAVATION, CLASS 10, ON-SITE	CY	245	CONTRACTOR SHALL PERFORM SITE GRADING / MASS EXCAVATION IN ACCORDANCE WITH CONTRACT DOCUMENTS.				
3	2010-1.08-E-0	EXCAVATION, CLASS 10, IMPORT	CY	2,904					
4	4010-1.08-A-0	SANITARY GRAVITY MAIN, TRENCHED, 8"	LF	135	TRENCH EXCAVATION, DEWATERING, FURNISHING AND INSTALLING THE PIPE, PIPE BEDDING, BACKFILLING, TESTING, AND INSPECTION SHALL BE CONSIDERED INCIDENTAL. WYES SHALL BE PAID FOR IN A SEPARTE BID ITEM.				
5	4010-1.08-E-0	SANITARY SEWER SERVICE CONNECTION, 8"x6" WYE	EA	3	MEASUREMENT SHALL BE BASED ON COUNT OF MANUFACTURED WYES INSTALLED. UNIT PRICE INCLUDES ALL WORK AND MATERIALS TO INSTALL THE TEES AS IDENTIFIED IN THE CONTRACT DOCUMENTS.				
6	4010-1.08-E-0	SANITARY SEWER SERVICE STUB, SDR 23.5, 6"	LF	87	MEASUREMENT SHALL BE TO THE NEAREST WHOLE FOOT. UNIT PRICE INCLUDES ALL COSTS FOR INSTALLING THE VARIOUS PIPE SIZES AND CLASSES INCLUDING ALL FITTINGS, TRENCHING, BACKFILLING AND COMPACTION. BID ITEM DOES NOT INCLUDE CONNECTION TO MAIN. MARK END OF SERVICE WITH PAINTED MARKER POST.				
7	4010-1.08-I-0	SANITARY SEWER CLEAN-OUT	EA	1	MEASUREMENT SHALL BE BASED ON COUNT OF CLEANOUTS INSTALLED. UNIT PRICE INCLUDES ALL WORK AND MATERIALS TO INSTALL THE CLEANOUTS AS IDENTIFIED IN THE CONTRACT DOCUMENTS. BID ITEM INCLUDES ALL FITTINGS, RISER PIPE, CASTING, AND CONCRETE CASTING ENCASEMENT.				
8	4020-1.08-A-1	STORM SEWER, TRENCHED, 18"	LF	72	UNIT PRICE INCLUDES TRENCH EXCAVATION, DEWATERING, FURNISHING AND INSTALLING PIPE, FURNISHING, PLACING AND COMPACTING BEDDING AND BACK FILL MATERIAL, CONNECTORS, ALLOWED PIPE MATERIALS AS SPECIFIED IN SECTION 4020, 2.01, A (RCP), F (HDPE), L (POLYPROPYLENE).				
9	4030-1.08-B-1	18" PIPE APRON WITH FOOTING	EA	1	BID ITEM INCLUDES ALL WORK AND MATERIALS TO INSTALL PIPE APRON AND FOOTING. BID ITEM ALSO INCLUDES ANY REQUIRED DEWATERING, EXCAVATION, BACKFILLING, CONCRETE, REINFORCEMENT, CONNECTORS, BEDDING, AND ANY OTHER APPURTENANCES.				
10	5010-1.08-D-1	WATER SERVICE STUB, 1"	LF	52	MEASUREMENT SHALL BE TO THE NEAREST WHOLE FOOT. UNIT PRICE INCLUDES ALL COSTS FOR INSTALLING THE SERVICE INCLUDING TRENCH EXCAVATION, BACKFILLING, DEWATERING, AND TRACER WIRE SYSTEM. CURB STOP AND CORPORATION TO BE PAID FOR SEPARATELY. MARK END OF SERVICE WITH PAINTED POST.				
11	5010-1.08-E-2	WATER SERVICE CORPORATION, 1"	EA	3	MEASUREMENT AND PAYMENT BASED ON THE COUNT OF CORPORATIONS INSTALLED. PAYMENT INCLUDES SADDLE AND TAPPING OF WATER MAIN. ALL WORK SHALL COMPLY WITH STANDARD SPECIFICATIONS AND AS MODIFIED IN THE PLANS.				
12	5010-1.08-E-3	WATER SERVICE CURB STOP & BOX, 1"	EA	3	MEASUREMENT AND PAYMENT BASED ON THE COUNT OF CURB STOPS INSTALLED. ALL WORK SHALL COMPLY WITH STANDARD SPECIFICATIONS AND AS MODIFIED IN THE PLANS. CURB STOP TO BE INSTALLED AT R.O.W.				
13	6010-1.08-A-0	MANHOLE, SANITARY, 48"	EA	1	PROVIDE MINIMUM OF 6" ADJUSTMENT, 2 RINGS. PROVIDE CHIMNEY SEAL AND 3 PIECE CASTING.				
14	6010-1.08-B-0	INTAKE, SW-505	EA	2	PROVIDE MINIMUM OF 6" ADJUSTMENT, 2 RINGS.				
15	6010-1.08-E-0	INTAKE OR MANHOLE ADJUSTMENT, MINOR	EA	3	THIS BID ITEM IS NOTED AS ADJUST MANHOLE IN THE CONTRACT DOCUMENTS. BID ITEM INCLUDES ALL WORK AND MATERIALS TO PERFORM THE FOLLOWING: THE REMOVAL OF EXISTING CASTING, INSTALLATION OF ADJUSTMENT RINGS TO BRING THE STRUCTURE TO GRADE, CONSTRUCTION OF A NEW PCC BOXOUT, AND THE RE-INSTALLATION OF THE EXISTING CASTING. 6" OF CHIMNEY REPAIR SHALL BE CONSIDERED INCIDENTAL TO THIS BID ITEM. CHIMNEY SEALS ARE NOT INCLUDED IN THIS BID ITEM.				
16	6020-1.08-A-0	INFILTRATION BARRIER, INTERNAL	EA	3	THIS BID ITEM IS MEASURED AND PAID FOR ON AN EACH BASIS. BID ITEM INCLUDES ALL MATERIALS AND WORK REQUIRED TO INSTALL CHIMNEY SEAL ON EXISTING SANITARY MANHOLES. FIELD VERIFY DIMENSIONS OF STRUCTURES PRIOR TO ORDERING SEALS. SEAL SHALL BE AN I/I BARRIER BY STRIKE PRODUCTS OR AN ENGINEER APPROVED EQUAL.				
17	7010-1.08-A-0	PAVEMENT, PCC, 6" THICK	SY	1,415	CONCRETE SHALL BE M-4 MIX. BID ITEM INCLUDES FINAL TRIMMING OF SUBBASE, INTEGRAL CURB, BARS AND REINFORCEMENT, JOINTS AND SEALING, EXPANSION MATERIAL, SURFACE CURING, PAVEMENT PROTECTION, SAFETY FENCE AS NEEDED TO PROTECT THE SLAB, COLD WEATHER PROTECTION, AND BOXOUTS FOR FIXTURES.				
18	7030-1.08-H-2	GRANULAR SURFACING, 6" THICK (ASSUMED QTY)	TON	100	MEASUREMENT WILL BE TO THE NEAREST 1/100TH OF A TON. UNIT PRICE INCLUDES MATERIAL AND LABOR FOR FURNISHING, PLACING AND COMPACTING AGGREGATE MATERIALS WHERE DESIGNATED ON THE PLANS. MEASUREMENT TO BE MADE BY INDIVIDUAL WEIGHT TICKETS FURNISHED WITH EACH LOAD OF MATERIAL DELIVERED FOR THE WORK. EACH TICKET SHALL INDICATE SOURCES, NET WEIGHT, KIND OF MATERIAL AND LOCATION OF DELIVERY. MATERIAL SHALL BE USED FOR TEMPORARY SURFACING AND RESTORATION OF EXISTING AGGREGATE DRIVES AS DIRECTED BY ENGINEER.				
19	7040-1.08-C-0	PARTIAL DEPTH PATCH, HMA, VARIABLE THICKNESS	TON	27	MEASUREMENT AND PAYMENT SHALL BE BASED ON THE TONS INSTALLED BASED ON CERTIFIED DELIVERY TICKETS. HMA MIX SHALL BE AS FOLLOWS: HMA STANDARD TRAFFIC (ST), 1/2" TYPE A AGGREGATE, GYRATORY DESIGN NDES 75, DESIGN GMM=96%, 75% CRUSHED PARTICLES, BINDER=PG58-285. BID ITEM DOES NOT INCLUDE PAVEMENT REMOVAL. BID ITEM INCLUDES FURNISHING AND PLACING PATCH MATERIAL INCLUDING BINDER AND TACK COAT. BID ITEM SHALL BE USED AS A SURFACE LEVEL/WEDGE IN AREAS NOT SCHEDULED TO BE MILLED TO PROVIDE A UNIFORM SURFACE FREE OF DIPS. 2" THICK AND 145 PCF USED AS BASIS OF QUANTITY.				
20	7040-1.08-H-0	PAVEMENT REMOVAL	SY	902	BID ITEM INCLUDES ALL WORK AND MATERIALS TO REMOVE PAVEMENT SHOWN IN THE CONTRACT DOCUMENTS. NO EXTRA PAYMENT WILL BE MADE FOR PAVEMENT REMOVED THAT IS NOT SCHEDULED TO BE REMOVED IN THE CONTRACT DOCUMENTS. SAWING, BREAKING, REMOVING, AND DISPOSING OF EXISTING PAVEMENT, CURB AND GUTTER, AND REINFORCING STEEL SHALL BE CONSIDERED INCIDENTAL TO THIS BID ITEM.				
21	8030-1.08-A-0	TRAFFIC CONTROL	LS	1	BID ITEM INCLUDES INSTALLATION, MAINTENANCE, AND REMOVAL OF ALL TEMPORARY TRAFFIC CONTROL MEASURES AS SHOWN IN THE CONTRACT DOCUMENTS OR NEEDED TO FACILITATE THE CONSTRUCTION AND PHASING OF THE PROJECT. BID ITEM ALSO INCLUDES THE REMOVAL OR COVERING OF ALL NECESSARY PERMANENT TRAFFIC CONTROL MEASURES FOR THE DURATION OF THE TEMPORARY TRAFFIC CONTROL MEASURES. BID ITEM INCLUDES THE UN-COVERING OR REINSTALLATION OF PERMANENT TRAFFIC CONTROL MEASURES FOLLOWING THE COMPLETION OF THE TEMPORARY TRAFFIC CONTROL.				
22	9010-1.08-B-0	HYDRAULIC SEEDING, FERTILIZING AND MULCHING, URBAN	ACRES	0.7	UNIT PRICE INCLUDES PREPARATION OF TOPSOIL FOR SEEDING, FURNISHING AND PLACING SEED, FERTILIZER, AND MULCH ON ALL DISTURBED TURF AREAS AND AREAS DESIGNATED ON PLANS, WATERING AND MAINTENANCE OF SEEDED AREAS TO THE SPECIFIED TIME LIMIT. MULCH SHALL BE BONDED FIBER MATRIX.				
23	9010-1.08-E-0	ROLLED EROSION CONTROL PRODUCT	SY	3,065	WIDTH AND LOCATION AS SHOWN IN THE CONTRACT DOCUMENTS. BID ITEM INCLUDES ALL FINE GRADING, STAPLES, ANCHORING DEVICES, AND MATERIALS FOR ANCHORING SLOTS TO INCLUDE RECP.				
24	9040-1.08-F-1	WATTLE, 9"	LF	354	CONTRACTOR SHALL INSTALL WATTLES IN ACCORDANCE WITH THE EROSION CONTROL PLAN. STAKES, MAINTENANCE, AND REMOVAL OF WATTLES AFTER CONSTRUCTION SHALL BE CONSIDERED INCIDENTAL TO THIS BID ITEM.				
25	9040-1.08-J-0	RIP RAP	TON	16	MEASUREMENT WILL BE TO THE NEAREST 1/100TH OF A TON. UNIT PRICE INCLUDES MATERIAL AND LABOR FOR FURNISHING AND PLACING RIP RAP WHERE DESIGNATED ON THE PLANS. MEASUREMENT TO BE MADE BY INDIVIDUAL WEIGHT TICKETS FURNISHED WITH EACH LOAD OF MATERIAL DELIVERED FOR THE WORK. EACH TICKET SHALL INDICATE SOURCES, NET WEIGHT, KIND OF MATERIAL AND LOCATION OF DELIVERY.				
26	9040-1.08-N-1	SILT FENCE	LF	602	CONTRACTOR SHALL INSTALL SILT FENCE WITH SWPPP. ANCHORING POSTS, SILT FENCE MAINTENANCE, AND REMOVAL OF SILT FENCE AFTER CONSTRUCTION SHALL BE CONSIDERED INCIDENTAL TO THIS BID ITEM.				
27	10010-1.08-A-0	DEMOLITION WORK	LS	1	BID ITEM INCLUDES ALL WORK AND MATERIALS TO REMOVE THE ON SITE FENCING, PILLAR FOUNDATIONS, AND GUARD RAIL AS IDENTIFIED IN DRAWING A.03. REMOVED MATERIAL SHALL BECOME THE PROPERTY OF THE CONTRACTOR. BID ITEM ALSO INCLUDES FURNISHING AND INSTALLING BACKFILL MATERIAL TO FILL AREAS WHERE FOUNDATIONS WERE REMOVED. SHAPE TO DRAIN.				
28	11020-1.08-A-0	MOBILIZATION	LS	1	BID ITEM INCLUDES THE MOVEMENT OF PERSONNEL, EQUIPMENT, AND SUPPLIES TO THE PROJECT SITE, THE ESTABLISHMENT OF OFFICES, BUILDINGS, AND OTHER FACILITIES NECESSARY FOR THE PROJECT, BONDING, PERMITS, AND OTHER EXPENSES THAT MAY BE INCURRED PRIOR TO CONSTRUCTION. WHEN 5% OF THE ORIGINAL CONTRACT AMOUNT HAS BEEN COMPLETED, 25% OF THE CONTRACT UNIT PRICE FOR MOBILIZATION SHALL BE PAID. WHEN 10% OF THE ORIGINAL CONTRACT AMOUNT HAS BEEN COMPLETED, 50% OF THE CONTRACT UNIT PRICE FOR MOBILIZATION SHALL BE PAID. WHEN 50% OF THE ORIGINAL CONTRACT AMOUNT HAS BEEN COMPLETED, 100% OF THE CONTRACT UNIT PRICE FOR MOBILIZATION SHALL BE PAID.				

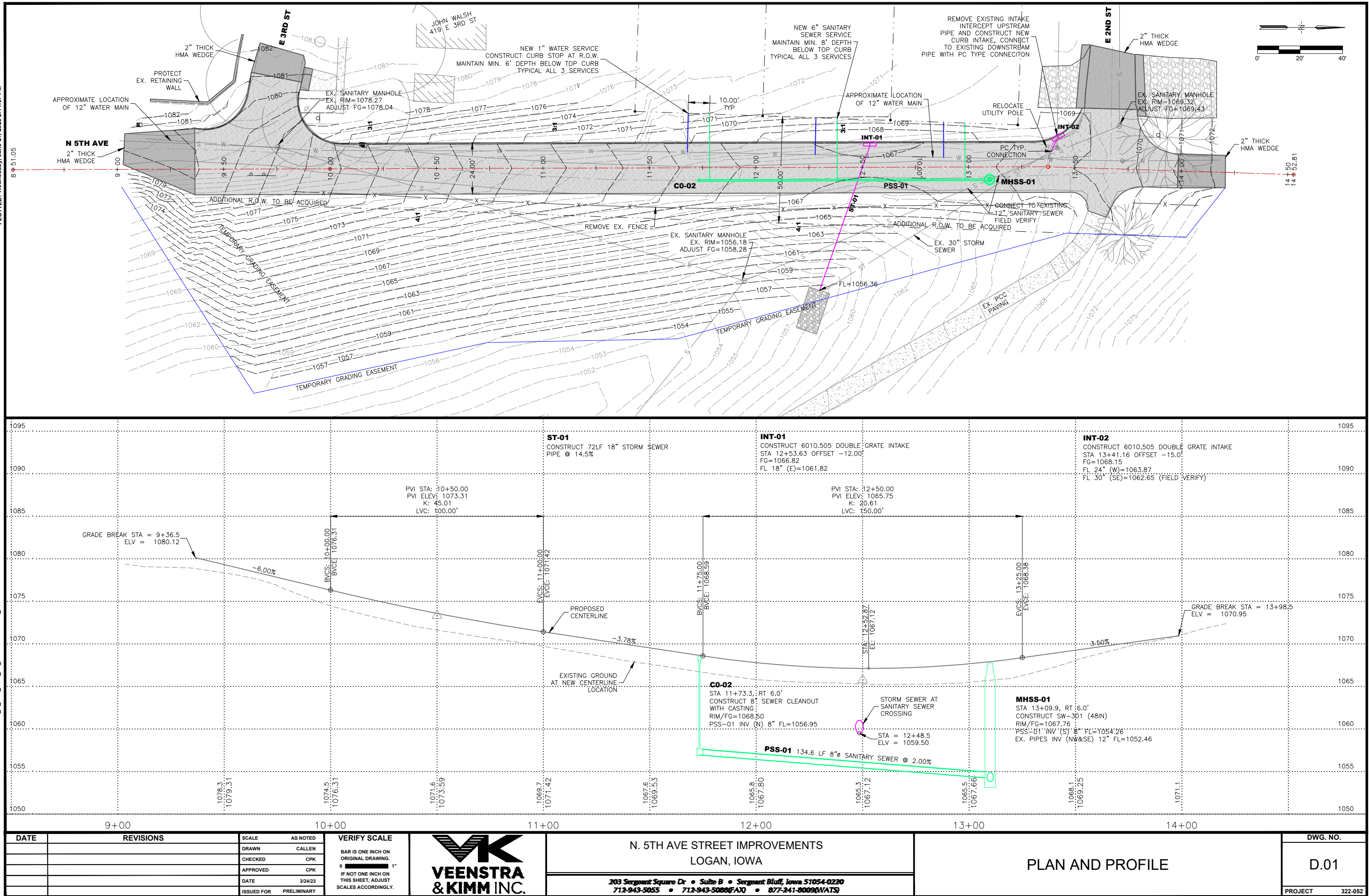
X-REFS: FILE PATH: \\VKNCF\SMC\SHARE\030\00\322-L\LOGAN\0322-0052_N_5TH_AVE_ST_IMPROVE\CAADD_PRODDRAWINGS\ESTIMATE REFERENCE PLOTTED: Wednesday, June 21, 2023 2:11:14 PM



ESTIMATE REFERENCE					
BID SECTION B: NON-CDBG FUNDED ITEMS					
BID ITEM NUMBER	REFERENCE	BID ITEM DESCRIPTION	UNIT	QUANTITY	REFERENCE NOTES
29	7010-1.08-E-0	CURB AND GUTTER, 24", 6" THICK	LF	10	CONCRETE SHALL BE M-4 MIX. BID ITEM INCLUDES FINAL TRIMMING OF SUBBASE, INTEGRAL CURB, BARS AND REINFORCEMENT, JOINTS AND SEALING, EXPANSION MATERIAL, SURFACE CURING, PAVEMENT PROTECTION, SAFETY FENCE AS NEEDED TO PROTECT THE SLAB, COLD WEATHER PROTECTION, AND BOXOUTS FOR FIXTURES.
30	7021-1.08-A-0	HMA OVERLAY	TON	16	BID ITEM INCLUDES ALL WORK AND MATERIALS TO REMOVE PAVEMENT SHOWN IN THE CONTRACT DOCUMENTS. NO EXTRA PAYMENT WILL BE MADE FOR PAVEMENT REMOVED THAT IS NOT SCHEDULED TO BE REMOVED IN THE CONTRACT DOCUMENTS. SAWING, BREAKING, REMOVING, AND DISPOSING OF EXISTING PAVEMENT, CURB AND GUTTER, AND REINFORCING STEEL SHALL BE CONSIDERED INCIDENTAL TO THIS BID ITEM.
31	7040-1.08-G-0	MILLING, COLD PATCH	SY	26	BID ITEM INCLUDES ALL WORK AND MATERIALS TO MILL PAVEMENT SHOWN IN THE CONTRACT DOCUMENTS. NO EXTRA PAYMENT WILL BE MADE FOR PAVEMENT MILLED THAT IS NOT SCHEDULED TO BE REMOVED IN THE CONTRACT DOCUMENTS. UNIT PRICE INCLUDES, BUT IS NOT LIMITED TO, MILLING PAVEMENT, FURNISHING WATER, AND SALVAGING, STOCKPILING, AND REMOVING CUTTINGS AND DEBRIS.
32	7040-1.08-H-0	PAVEMENT REMOVAL	SY	3	BID ITEM INCLUDES ALL WORK AND MATERIALS TO REMOVE PAVEMENT SHOWN IN THE CONTRACT DOCUMENTS. NO EXTRA PAYMENT WILL BE MADE FOR PAVEMENT REMOVED THAT IS NOT SCHEDULED TO BE REMOVED IN THE CONTRACT DOCUMENTS. SAWING, BREAKING, REMOVING, AND DISPOSING OF EXISTING PAVEMENT, CURB AND GUTTER, AND REINFORCING STEEL SHALL BE CONSIDERED INCIDENTAL TO THIS BID ITEM.
33	8030-1.08-A-0	TRAFFIC CONTROL	LS	1	BID ITEM INCLUDES INSTALLATION, MAINTENANCE, AND REMOVAL OF ALL TEMPORARY TRAFFIC CONTROL MEASURES AS SHOWN IN THE CONTRACT DOCUMENTS OR NEEDED TO FACILITATE THE CONSTRUCTION AND PHASING OF THE PROJECT. BID ITEM ALSO INCLUDES THE REMOVAL OR COVERING OF ALL NECESSARY PERMANENT TRAFFIC CONTROL MEASURES FOR THE DURATION OF THE TEMPORARY TRAFFIC CONTROL MEASURES. BID ITEM INCLUDES THE UN-COVERING OR REINSTALLATION OF PERMANENT TRAFFIC CONTROL MEASURES FOLLOWING THE COMPLETION OF THE TEMPORARY TRAFFIC CONTROL.

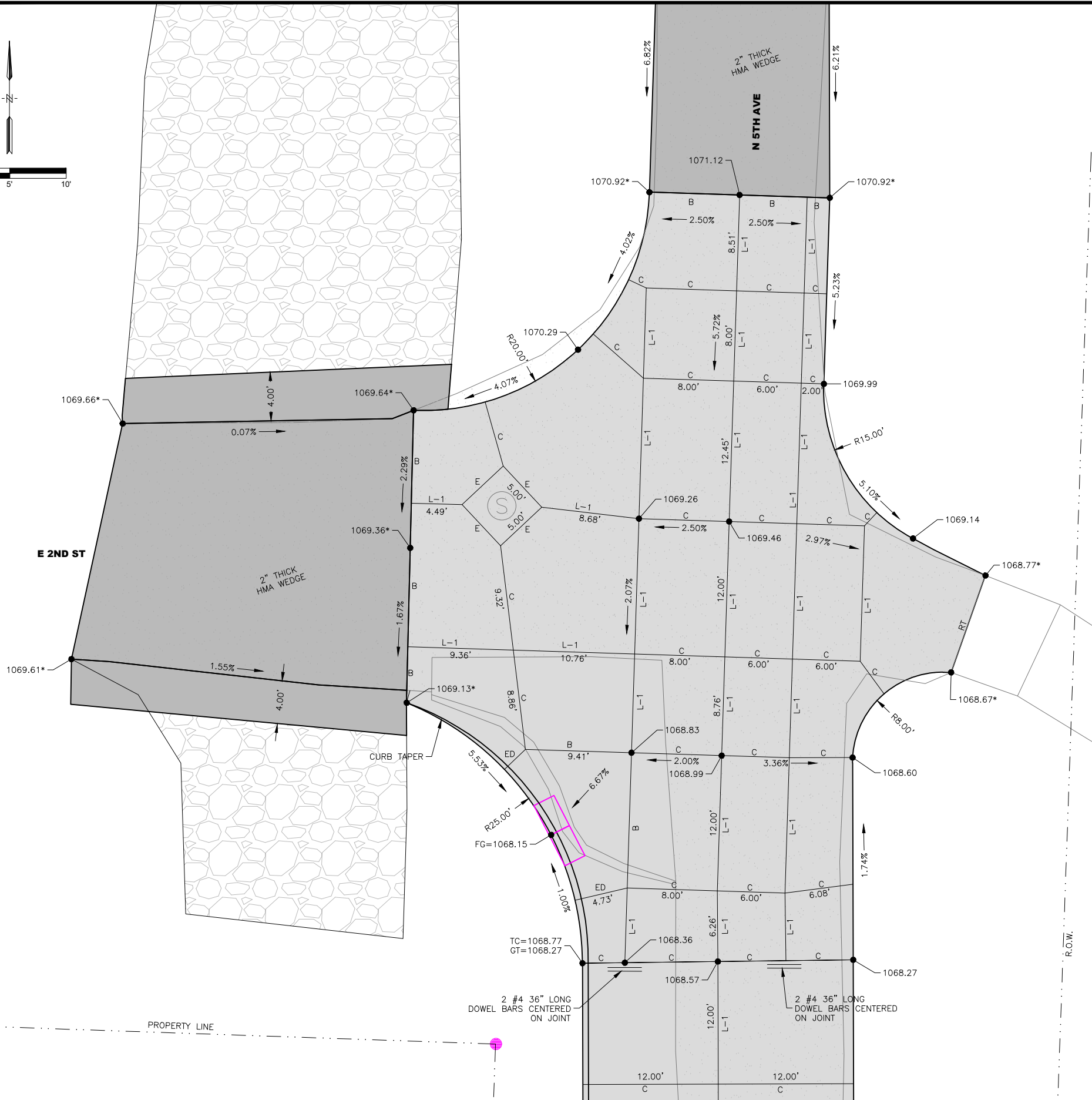
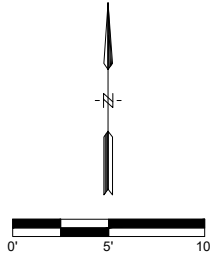
DATE	REVISIONS	SCALE	AS NOTED	VERIFY SCALE	VEENSTRA & KIMM INC.	N. 5TH AVE STREET IMPROVEMENTS LOGAN, IOWA 203 Sergeant Square Dr • Suite B • Sergeant Bluff, Iowa 51054-0220 712-943-5055 • 712-943-5066(FAX) • 877-241-8009(VATS)	ESTIMATE REFERENCE NON-CDBG FUNDED ITEMS	DWG. NO.
		DRAWN	CALLEN	BAR IS ONE INCH ON ORIGINAL DRAWING. 0 1"				C.02
		CHECKED	CPK	IF NOT ONE INCH ON THIS SHEET, ADJUST SCALES ACCORDINGLY.				PROJECT 322-052
		APPROVED	CPK					
		DATE	3/24/23					
		ISSUED FOR	PRELIMINARY					

X-REFS: BASE DRAWING



PLOTTED: Wednesday, June 21, 2023 2:12:22 PM

X-REFS: BASE DRAWING
FILE PATH: \\KINC-FS\MCSHARE\0300\0322-LOGAN\0322-0052_N_5TH_AVE_ST_IMPROVE\CAADD_PRODDRAWINGS\INTERSECTION DETAILS



LEGEND	
	6" THICK PCC
	2" THICK HMA

LOGAN
CEMETERY

DATE	REVISIONS

SCALE	AS NOTED
DRAWN	CALLEN
CHECKED	CPK
APPROVED	CPK
DATE	3/24/23
ISSUED FOR	PRELIMINARY

VERIFY SCALE
BAR IS ONE INCH ON ORIGINAL DRAWING.
IF NOT ONE INCH ON THIS SHEET, ADJUST SCALES ACCORDINGLY.



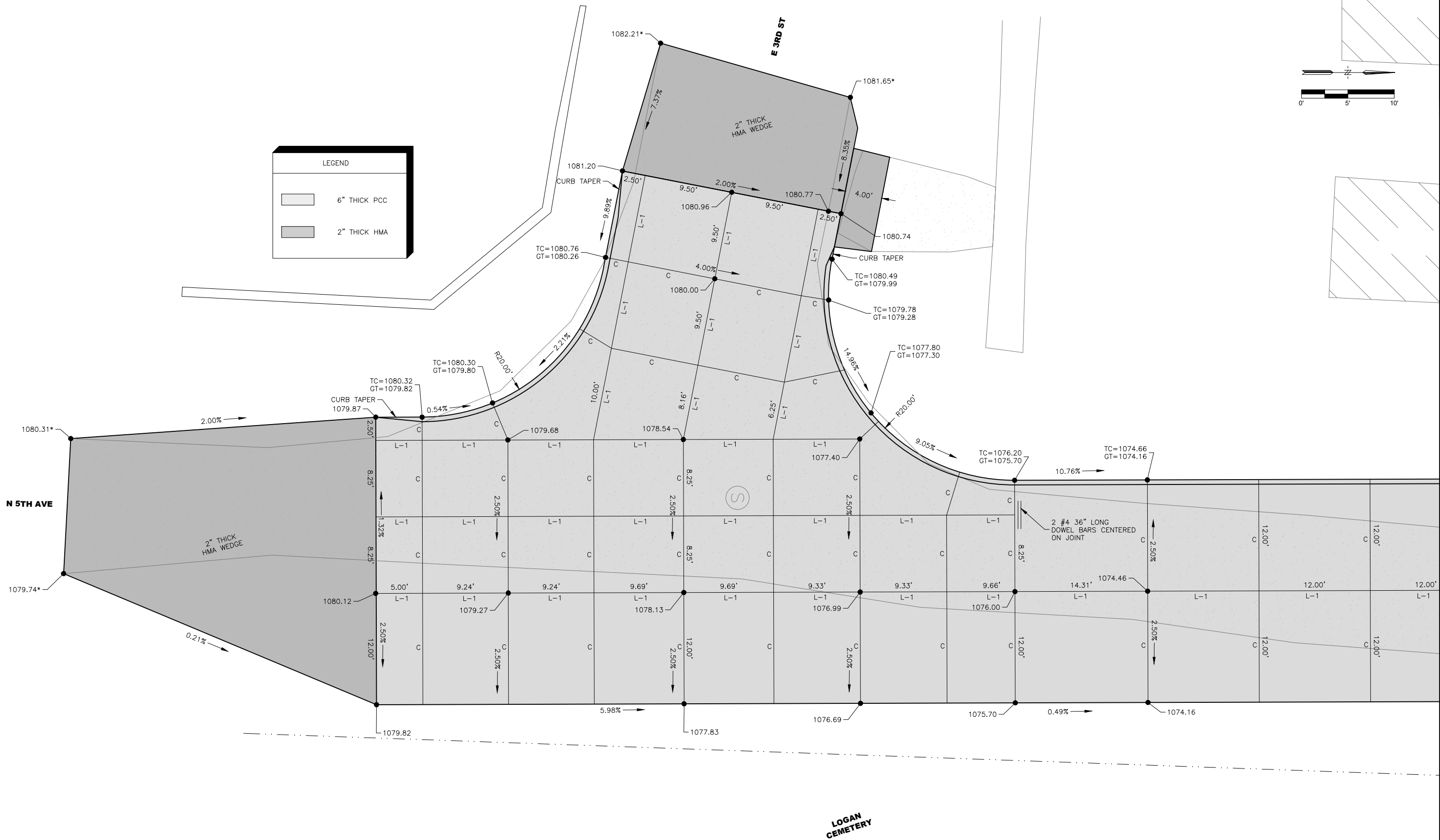
N. 5TH AVE STREET IMPROVEMENTS LOGAN, IOWA	
203 Sergeant Square Dr • Suite B • Sergeant Bluff, Iowa 51054-0220 712-943-5055 • 712-943-5056(FAX) • 877-241-8009(VATS)	

INTERSECTION DETAILS	
----------------------	--

DWG. NO.
L.01
PROJECT 322-052

PLOTTED: Wednesday, June 21, 2023 2:12:24 PM

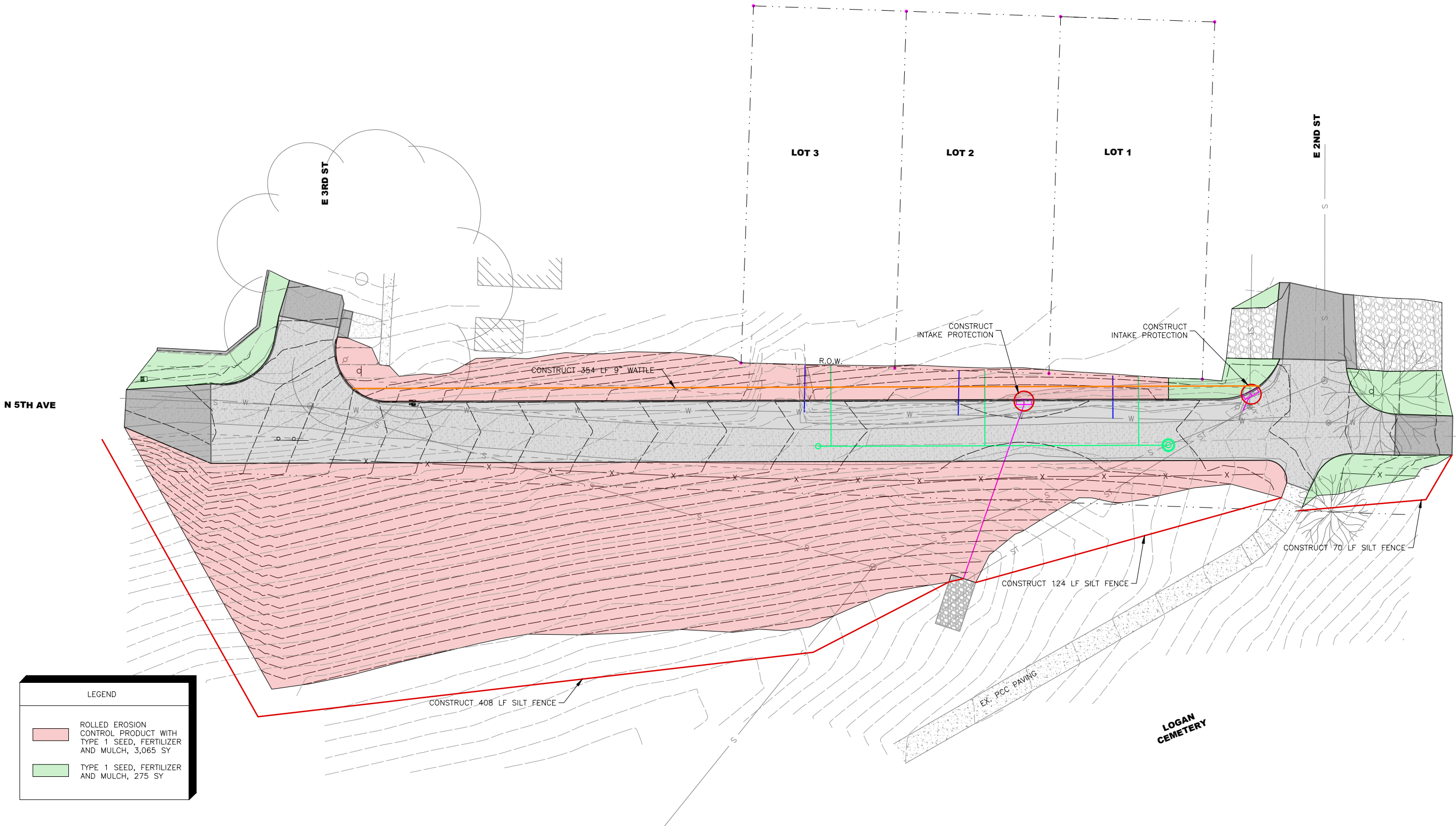
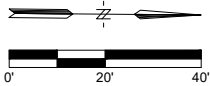
X-REFS: BASE DRAWING
FILE PATH: \\KINC-FS\MCSHARE\03000\0322-L\OGAN\0322-0052_N_5TH_AVE_ST_IMPROVE\CAADD_PRODDRAWINGS\INTERSECTION DETAILS



DATE		REVISIONS		SCALE	AS NOTED	VERIFY SCALE		N. 5TH AVE STREET IMPROVEMENTS LOGAN, IOWA		INTERSECTION DETAILS		DWG. NO.	
				DRAWN	CALLEN	BAR IS ONE INCH ON ORIGINAL DRAWING. 0 1"		203 Sergeant Square Dr • Suite B • Sergeant Bluff, Iowa 51054-0220 712-943-5055 • 712-943-5066(FAX) • 877-241-8009(VATS)				L.02	
				CHECKED	CPK	IF NOT ONE INCH ON THIS SHEET, ADJUST SCALES ACCORDINGLY.				PROJECT		322-052	
				APPROVED	CPK								
				DATE	3/24/23								
				ISSUED FOR	PRELIMINARY								

PLOTTED: Wednesday, June 21, 2023 2:12:51 PM

X-REFS: BASE DRAWING & Aerial Photo
FILE PATH: \\VKN\KIM\FSM\CSHARE\03000\322-L\LOGAN\0322-0052_N_5TH_AVE_ST_IMPROV\CAADD_PRODDRAWINGS\LA.01 LANDSCAPE PLAN



LEGEND

ROLLED EROSION CONTROL PRODUCT WITH TYPE 1 SEED, FERTILIZER AND MULCH, 3,065 SY

TYPE 1 SEED, FERTILIZER AND MULCH, 275 SY

DATE	REVISIONS	SCALE	AS NOTED
		DRAWN	CALLEN
		CHECKED	CPK
		APPROVED	CPK
		DATE	3/24/23
		ISSUED FOR	PRELIMINARY

VERIFY SCALE
BAR IS ONE INCH ON ORIGINAL DRAWING.
0 1"
IF NOT ONE INCH ON THIS SHEET, ADJUST SCALES ACCORDINGLY.



N. 5TH AVE STREET IMPROVEMENTS
LOGAN, IOWA

203 Sergeant Square Dr • Suite B • Sergeant Bluff, Iowa 51054-0220
712-943-5055 • 712-943-5066(FAX) • 877-241-8009(VOATS)

LANDSCAPE PLAN

PROJECT 322-052

DWG. NO.
LA.01
PROJECT 322-052